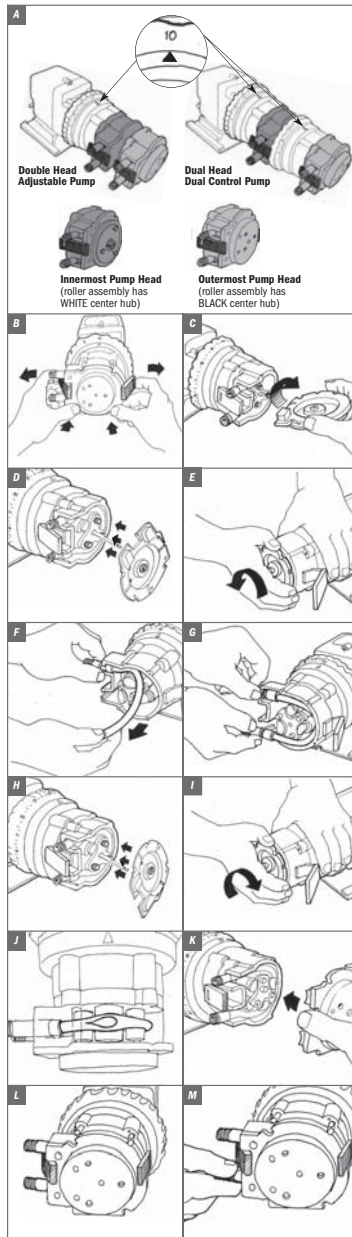


QuickPro® PUMP HEAD AND PUMP TUBE REPLACEMENT

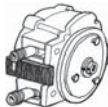
Classic Series Double Head and Dual Head Dual Control Pumps

WARNING TO BE INSTALLED AND MAINTAINED BY PROPERLY TRAINED PROFESSIONAL INSTALLER ONLY. READ MANUAL & LABELS FOR ALL SAFETY INFORMATION & INSTRUCTIONS.

In general, the steps outline how to remove the old tubes from both heads and then how each new tube is installed.



PUMP HEAD REPLACEMENT



Innermost Pump Head
(roller assembly has WHITE center hub)

I PREPARATION

- Follow all safety precautions prior to head replacement.

- Prior to service, pump water or a compatible buffer solution through the pump and suction and discharge lines to remove chemical and avoid contact.

II REPLACE THE PUMP HEAD

- Remove new pump head from package.
- Unlatch both latches.
- Remove the cover, pump tube & roller assembly and set aside.
- Follow **Pump Tube Replacement steps 1-12** and then continue with **steps 18-20**.
- Using new pump head parts, follow **III INSTALL THE PUMP TUBE, EXPAND THE ROLLER ASSEMBLY AND CENTER THE TUBE** steps 1-26 from **PUMP TUBE REPLACEMENT**.

PUMP TUBE REPLACEMENT

I PREPARATION

- Follow all safety precautions prior to tube replacement.
- Prior to service, pump water or a compatible buffer solution through the pump and suction and discharge lines to remove chemical and avoid contact.

II REMOVE THE PUMP TUBE

- Turn the pump off and unplug the power cord. On the adjustable model, ensure that the feed rate control is set to 10. **Figure A**
- Depressurize and disconnect the suction and discharge lines.
- Outermost Head: Remove The Pump Tube**
- Open the back and front of the latches on both sides of the head. **Figure B**
- For CE pump only: Remove the safety screw on cover.
- Remove the tube housing cover and flip to use as a tool in the next step. **Figure C**
- Align the center of the inverted cover with the center of the roller assembly so that the three holes on the face of the cover align with the three knurled lugs on the roller assembly. Position the cover feet near the tube fittings. **Figure D**
- NOTE: The roller assembly needs to be collapsed to remove the tube.
- On the adjustable pump, hold the feed rate control securely. On the fixed output pump hold the pump motor securely. Use the tube housing cover as a wrench and quickly (snap) rotate the cover counter-clockwise to collapse the roller assembly. The tube will no longer be pressed against the tube housing wall. **Figure E**
- NOTE: Counter-clockwise is viewed from facing the head of the pump.
- Remove and discard the pump tube. **Figure F**
- Remove the roller assembly, and the tube housing. On the adjustable pump also remove the shaft. Set them aside to re-install later.

Innermost Head: Remove The Pump Tube

- | | |
|---|--|
| Double Head Adjustable <ul style="list-style-type: none"> Open the back & front of the latches on both sides of the head. Figure B | Dual Head Dual Control <ul style="list-style-type: none"> Remove the feed rate control to access the Innermost pump head. Open the back & front of the latches on both sides of the head. Figure B |
|---|--|
- For CE pump only: Remove the safety screw on cover.
- Remove the innermost tube housing cover and flip to use as a tool in the next step. **Figure C**
 - Slide the innermost tube housing cover on the shaft and align the rivets with the three knurled lugs on the roller assembly. **Figure D**
 - On the adjustable model, hold the feed rate control securely. On the fixed output model hold the pump motor securely. Use the tube housing cover as a wrench and quickly (snap) rotate the cover counter-clockwise to collapse the roller assembly. The tube will no longer be pressed against the tube housing wall. **Figure E**
 - NOTE: Counter-clockwise is viewed from facing the head of the pump.
 - Remove and discard the old pump tube. **Figure F**
 - Remove the roller assembly, and the tube housing. On the adjustable pump also remove the shaft. Set them aside to re-install later.
 - Use a non-nitrus all-purpose cleaner to clean chemical residue from the tube housings, roller assemblies and covers.
 - Check the housings for cracks and replace, if cracked.
 - Ensure the rollers turn freely. Replace the roller assembly if the rollers are seized or worn or if there is a reduction or lack of output from the pump.
 - Reinstall the clean tube housing for the innermost pump head. On an adjustable model, also install the shaft.
 - Apply AquaShield® to the shaft tip.
 - Install the roller assembly.
 - NOTE: The innermost roller assembly has a white center hub.

III INSTALL THE PUMP TUBE, EXPAND THE ROLLER ASSEMBLY & CENTER THE PUMP TUBE

Innermost Head: Install The Pump Tube

- Ensure the power to the pump is off. On the adjustable model, ensure that the feed rate controls are set to 10. **Figure A**
 - Place the new tube in the innermost pump head; use your fingers to center it over the rollers. **Figure G**
 - Place the innermost tube housing cover on the innermost tube housing, affix the front latches to the over lip and then press the latches back to secure.
 - With the cover latched, plug the pump in and turn the power on. Allow the pump to run the roller assembly in its collapsed position for approximately two minutes, to relax the tube.
 - Turn the pump off and unplug the power cord.
 - Remove the innermost tube housing cover and flip to use as a tool in the next step. **Figure C**
 - Slide the inverted cover on the shaft and align the rivets with the three knurled lugs on the roller assembly. Position the cover feet near the bottom. **Figure H**
 - NOTE: The roller assembly needs to be expanded so the tube is pressed against the tube housing wall. **Figure I**
 - Expand roller assembly.
- | | |
|--|--|
| Double Head Adjustable & Dual Head Dual Control <ul style="list-style-type: none"> Hold the feed rate control securely, use the cover as a wrench and quickly (snap) rotate the roller assembly clockwise to expand the roller assembly. The tube will be pressed against the tube housing wall. Figure I & J Proceed to step 9. NOTE: Clockwise is viewed from facing the head of the pump. | Double Head Fixed <ol style="list-style-type: none"> Slide one latch out to remove it from the tube housing. Insert the latch end into the keyed slot into the vent in the rear of the motor housing. While pressing the latch into the vent, gently rotate the cover clockwise until it stops. Figure R & S Holding the pump securely, use the adapter cover as a wrench and quickly (snap) rotate the roller assembly clockwise to expand the roller assembly. The tube will be pressed against the tube housing wall. Figure I & J NOTE: Clockwise is viewed from facing the head of the pump. Remove the latch from the vent and re-attach it to the tube housing. Proceed to step 9. |
|--|--|

- Place the tube housing cover on the tube housing, affix the front latches to the cover lip and then press the latches back to secure. Be sure the cover is seated with the sleeve bearing on the shaft and is flush with housing, before latching.
- With the cover latched, plug the pump in and turn it on. Allow the pump to run the roller assembly in its expanded position for approximately two minutes to relax the tube.
- Remove the relaxed tube from the innermost head (follow **Outermost Head: Remove the Pump Tube steps 3-7**) and set it aside to be installed in the outermost head later.
- Install a new pump tube in the innermost head (follow **Innermost Head: Install the Pump Tube steps 1-10**).

Innermost Head: Center The Pump Tube

- Ensure the pump is off. Lift the latch located between the tube fittings, leaving the end of the latch engaged with the lip on the tube housing cover. Leave the latch on the opposite side engaged. **Figure L**
- Plug the pump in and turn it on. Turn the tube fitting on the suction side not more than 1/8 of a turn in the direction the tube must move. **Figure M**
- Do not let go of the fitting until the tube rides approximately in center of the rollers.
- Turn pump off, let go of the fitting, and secure the latch between the fittings.
- For CE pump only: Reinstall the safety screw on the cover.

Outermost Head: Install The Pump Tube

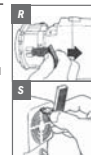
- | | |
|--|--|
| Double Head Adjustable <ul style="list-style-type: none"> Reinstall clean tube housing and roller assembly (with black center hub) for the outermost head. | Dual Head Dual Control <ul style="list-style-type: none"> Reinstall the feed rate control & insert the outermost shaft, confirm the feed rate control setting is on #10. Reinstall clean tube housing and roller assembly (with black center hub) for the outermost head. |
|--|--|
- Place the previously relaxed new tube in the outermost pump head; use your fingers to center it over the rollers.
 - Align the center of the inverted cover with the center of the roller assembly so that the three holes on the face of the cover align with the three knurled lugs on the roller assembly. Position the cover feet near the bottom. **Figure H**
 - NOTE: The roller assembly needs to be expanded so the tube is pressed against the tube housing wall.
 - Expand the roller assembly.

Double Head Adjustable & Dual Head Dual Control

- Hold the feed rate control securely, use the cover as a wrench and quickly (snap) rotate the roller assembly clockwise to expand the roller assembly. The tube will be pressed against the tube housing wall. **Figure I & J** Proceed to step 21.
- NOTE: Clockwise is viewed from facing the head of the pump.

Double Head Fixed

- Slide one latch out to remove it from the tube housing. Insert the latch end into the keyed slot into the back of the motor vent. While pressing the latch into the rear of the motor, gently rotate the cover clockwise until it stops. **Figure R & S**
- Holding the pump securely, use the cover as a wrench and quickly (snap) rotate the roller assembly clockwise to expand the roller assembly. The tube will be pressed against the tube housing wall. **Figure I & J**
- NOTE: Clockwise is viewed from facing the head of the pump.
- Remove the latch from the vent and re-attach it to the tube housing. Proceed to step 21.



- Apply a small amount of AquaShield® to the cover bushing ONLY. DO NOT lubricate the pump tube.

Outermost Head: Center The Pump Tube

- Place the tube housing cover (feet first) on the tube housing, affix the front of the latches to the cover lip and then press the latches back to secure. Be sure the cover is seated with the sleeve bearing on the shaft and is flush with housing, before latching. **Figure K**
- Follow **Innermost Head: Center The Pump Tube steps 13-16**.
- Inspect the suction and discharge lines, point of injection, and check valve duckbill for blockages. Clean all deposits and/or replace parts as required. Failure to do so may lead to poor pump performance, including shortened tube life. Reference your pump owner's manual for details.
- Reconnect the suction and discharge lines. DO NOT allow tube fittings to turn inside the pump housing.
- Turn the pump on and run for two minutes to verify operation.