

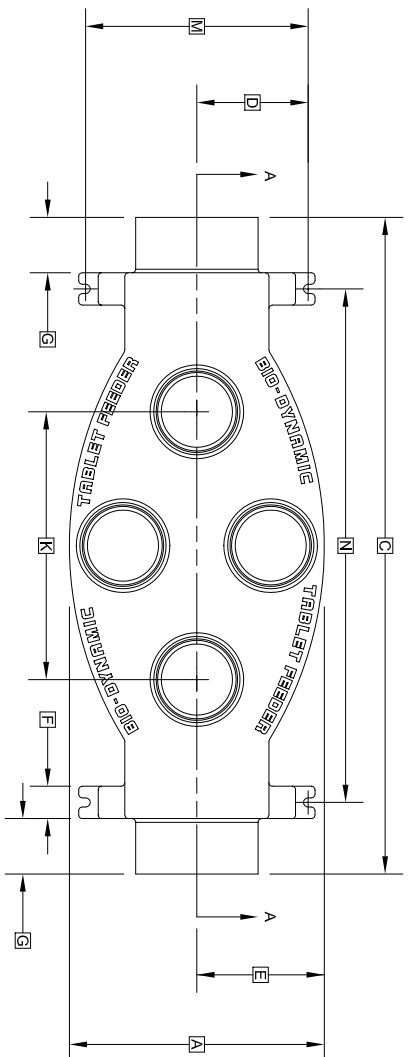


**PROMAG ENVIRO**  
Leader in Water & Waste Water Treatment Supply

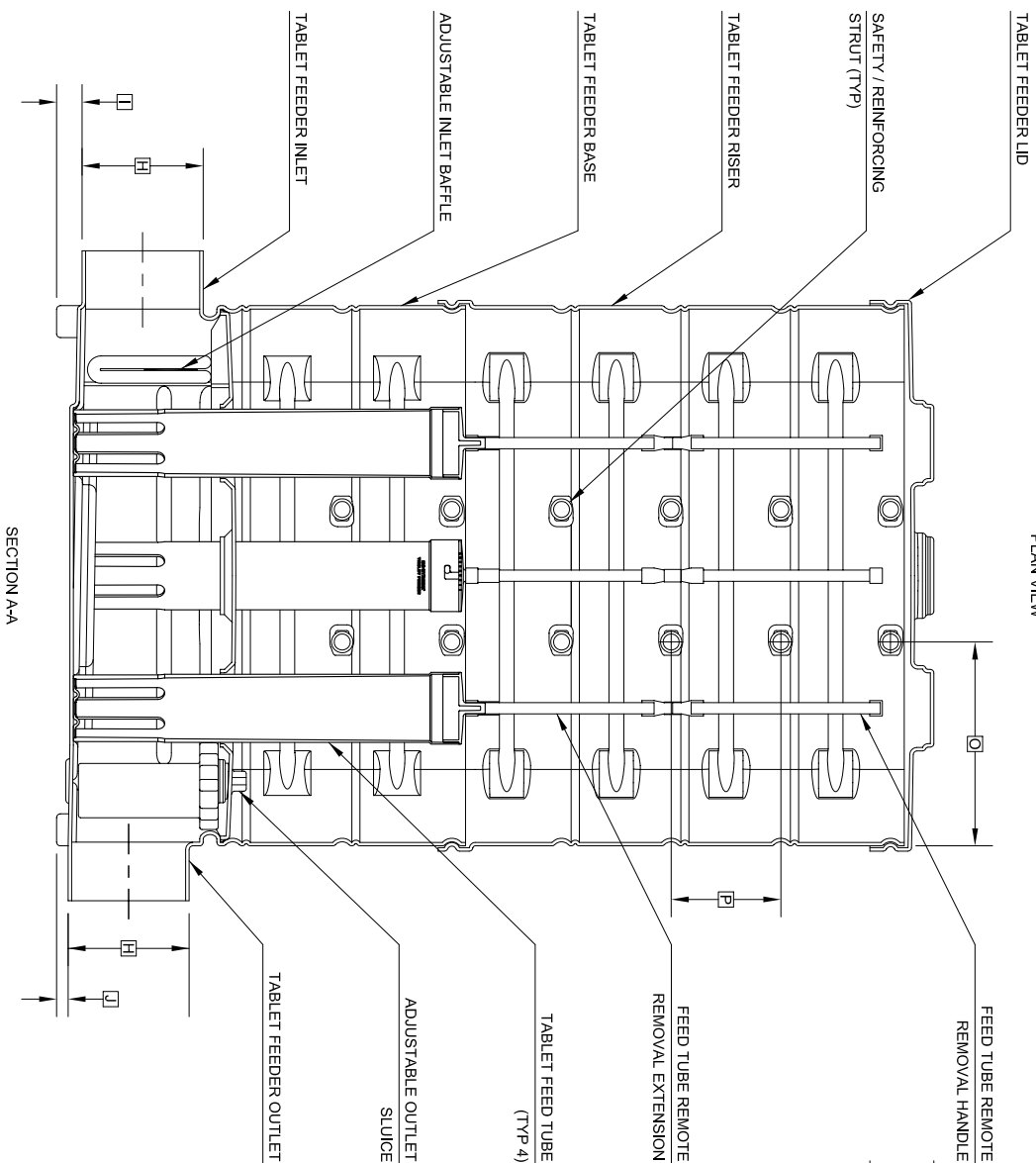
CALL US TOLL FREE 1.866.449.2781  
www.promagenviro.com info@promagenviro.com

GENERAL NOTES:

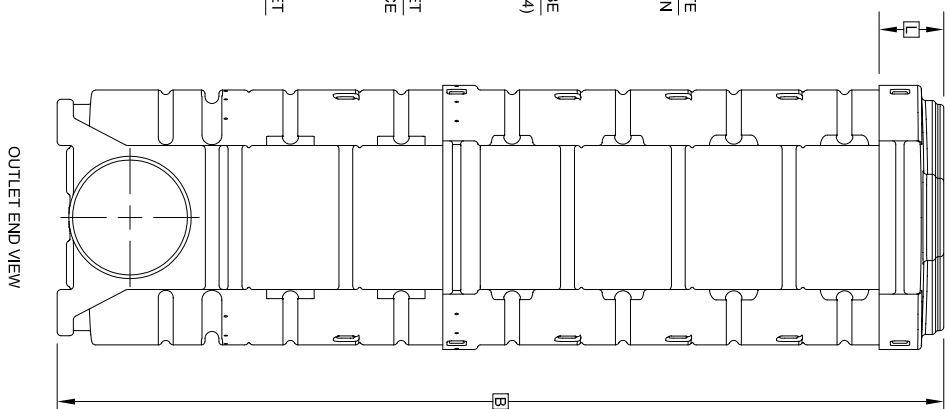
- 1 FALL THROUGH TABLET FEEDER FROM INLET INVERT TO OUTLET INVERT IS ONE INCH ±3/8".
- 2 FINISHED GRADE MUST BE MAINTAINED AT LEAST SIX INCHES BELOW TOP OF LID.
- 3 RISER HEIGHT IS ADJUSTABLE IN SIX INCH INCREMENTS.
- 4 WHERE TABLET FEEDER IS INSTALLED WITHOUT MOUNTING BRACKETS, INSTALL ON FOUR INCH SAND OR FINE GRAVEL LEVELING PAD.
- 5 WHERE SAFETY / REINFORCING STRUTS ARE REMOVED WHILE TRIMMING RISER ALONG CUT LINES, STRUTS MUST BE REINSTALLED AT TWELVE INCH INCREMENTS. A PAIR OF STRUTS MUST BE INSTALLED IN THE TOP STRUT LOCATIONS.



PLAN VIEW



SECTION A-A



OUTLET END VIEW

**PROJECT ENGINEER'S APPROVAL:**

I (WE) HEREBY CERTIFY THAT THIS DRAWING HAS BEEN CHECKED AND IS APPROVED FOR USE IN CONFORMITY WITH THE CONTRACT DOCUMENTS.

DATE: \_\_\_\_\_

NAME: \_\_\_\_\_

**CONTRACTOR'S CERTIFICATION:**

I (WE) HEREBY CERTIFY THAT THIS DRAWING HAS BEEN CHECKED AND IS APPROVED FOR USE IN CONFORMITY WITH THE CONTRACT DOCUMENTS.

DATE: \_\_\_\_\_

NAME: \_\_\_\_\_

**CRITICAL DIMENSIONS**

|   |                 |   |             |
|---|-----------------|---|-------------|
| A | 1'-2 1/2"       | J | 0'-0 1/2"   |
| B | 2'-6" TO 10'-0" | K | 1'-2 1/2"   |
| C | 2'-11 3/4"      | L | 0'-3 1/2"   |
| D | 0'-6"           | M | 1'-0"       |
| E | 0'-7 1/4"       | N | 2'-4"       |
| F | 0'-1 3/4" (TYP) | O | 0'-11"      |
| G | 0'-3" (TYP)     | P | 0'-6" (TYP) |
| H | 0'-6 5/8" (TYP) | Q |             |
| I | 0'-1 1/2"       | R |             |

**TOLERANCES**

NOMINAL DIMENSIONS ARE SHOWN AND MAY VARY ±3/8" FOR ROTOWOLDED COMPONENTS.

|                         |                |     |
|-------------------------|----------------|-----|
| U.S. AIA                | 11-14-07       | B   |
| FOREIGN PATENTS PENDING | <b>norwaco</b> |     |
| BODYNAMIC®              | MODEL JPS 400S | BOS |
| TABLET FEEDER           | SCALE          | JMM |
|                         | 10-2-97        | NTS |
| MAM/II                  | PC-5-9505      |     |