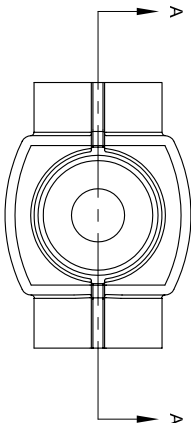


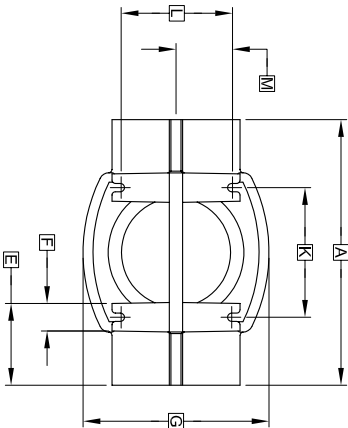


PROMAG ENVIRO
Leader in Water & Waste Water Treatment Supply

CALL US TOLL FREE 1.866.449.2781
www.promagenviro.com info@promagenviro.com



TOP VIEW



BOTTOM VIEW

GENERAL NOTES:

- 1 FALL THROUGH TABLET FEEDER FROM INLET INVERT TO OUTLET INVERT IS ONE QUARTER INCH.
- 2 FINISHED GRADE MUST BE MAINTAINED AT LEAST SIX INCHES BELOW TOP OF LID.
- 3 INLET, OUTLET AND RISER HUBS ACCEPT STANDARD 4" SCHEDULE 40 PVC PIPES AND FITTINGS.
- 4 WHERE TABLET FEEDER IS INSTALLED WITHOUT MOUNTING BRACKETS, INSTALL ON FOUR INCH SAND OR FINE GRAVEL LEVELING PAD.

PROJECT ENGINEER'S APPROVAL:
I (WE) HEREBY CERTIFY THAT THIS DRAWING HAS BEEN CHECKED AND IS APPROVED FOR USE IN CONFORMITY WITH THE CONTRACT DOCUMENTS.

DATE: _____

NAME: _____

CONTRACTOR'S CERTIFICATION:
I (WE) HEREBY CERTIFY THAT THIS DRAWING HAS BEEN CHECKED AND IS APPROVED FOR USE IN CONFORMITY WITH THE CONTRACT DOCUMENTS.

DATE: _____

NAME: _____

CRITICAL DIMENSIONS

A	0'-10"	N	
B	1'-11 1/4"	O	
C	0'-7 3/4"	P	
D	0'-4 13/16"	Q	
E	0'-2"	R	
F	0'-1"	S	
G	0'-7"	T	
H	0'-5 1/8"	U	
I	0'-1"	V	
J	0'-0 3/4"	W	
K	0'-4 7/8"	X	
L	0'-4 1/4"	Y	
M	0'-2 1/8"	Z	

TOLERANCES

NOMINAL DIMENSIONS ARE SHOWN AND MAY VARY $\pm 1/32"$ FOR INJECTION MOLDED COMPONENTS.

U.S. AND FOREIGN PATENTS PENDING

norweco

BIO-DYNAMIC®
MODEL LF 1000
TABLET FEEDER

11-14-07

C

BDS

JMM

7-31-02

NTS

MADE IN

PC-S-9902