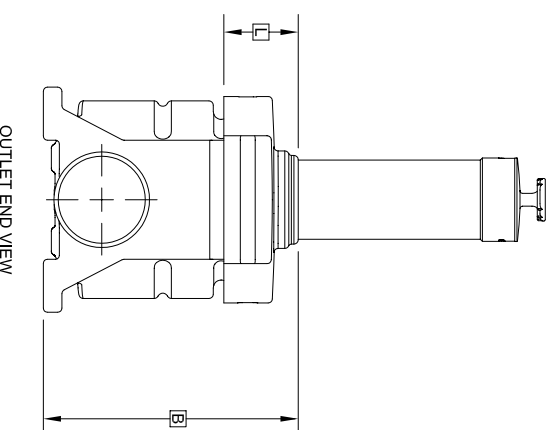
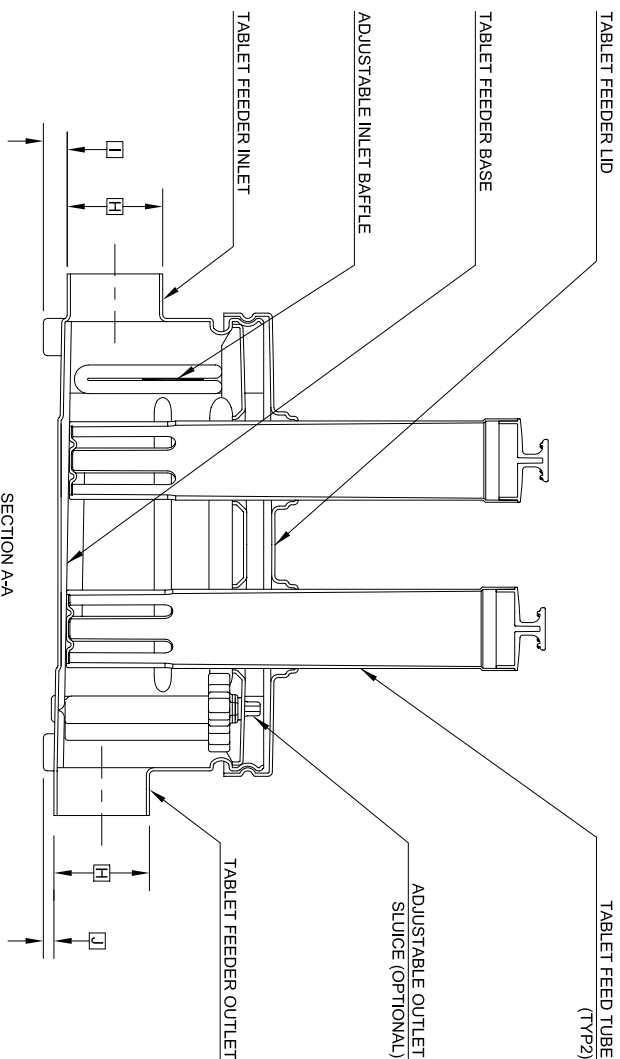
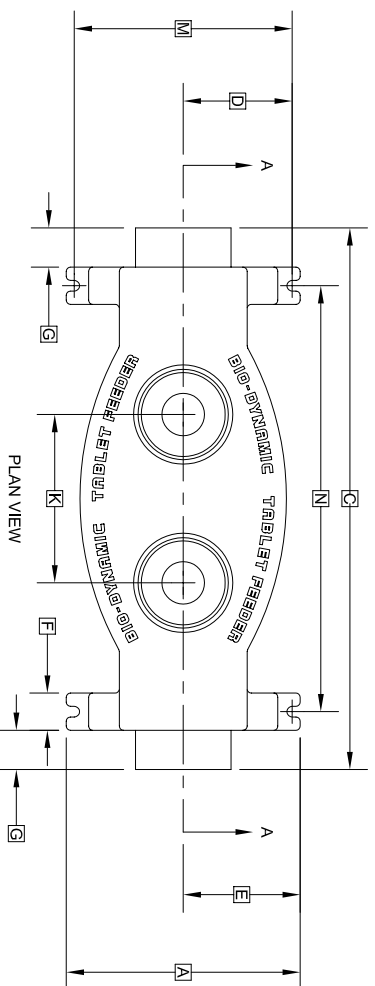


GENERAL NOTES:

- ① FALL THROUGH TABLET FEEDER FROM INLET INVERT TO OUTLET INVERT IS ONE INCH ±3/8".
- ② FINISHED GRADE MUST BE MAINTAINED AT LEAST SIX INCHES BELOW TOP OF LID.
- ③ FEEDER BASE HEIGHT MAY BE REDUCED IN SIX INCH INCREMENTS.
- ④ WHERE TABLET FEEDER IS INSTALLED WITHOUT MOUNTING BRACKETS, INSTALL ON FOUR INCH SAND OR FINE GRAVEL LEVELING PAD.



PROJECT ENGINEER'S APPROVAL:
I (WE) HEREBY CERTIFY THAT THIS DRAWING HAS BEEN CHECKED AND IS APPROVED FOR USE IN CONFORMITY WITH THE CONTRACT DOCUMENTS.
DATE: _____
NAME: _____

CONTRACTOR'S CERTIFICATION:
I (WE) HEREBY CERTIFY THAT THIS DRAWING HAS BEEN CHECKED AND IS APPROVED FOR USE IN CONFORMITY WITH THE CONTRACT DOCUMENTS.
DATE: _____
NAME: _____

CRITICAL DIMENSIONS			
A	0'-10 1/2"	J	0'-0 1/2"
B	1'-0" TO 1'-6"	K	0'-8"
C	2'-1 1/2"	L	0'-3 1/2"
D	0'-5"	M	0'-10"
E	0'-5 1/4"	N	1'-8"
F	0'-1 3/4" (TYP)	O	
G	0'-2" (TYP)	P	
H	0'-4 1/2" (TYP)	Q	
I	0'-1 1/2"	R	

TOLERANCES
NOMINAL DIMENSIONS ARE SHOWN AND MAY VARY ±3/8" FOR ROTOMOLDED COMPONENTS.

U.S. PATENT PENDING	FOREIGN PATENTS PENDING
norwaco	
BIO-DYNAMIC® MODEL XI 2006 TABLET FEEDER	
DATE: 10-2-97	SCALE: NTS
PC-5-9501	