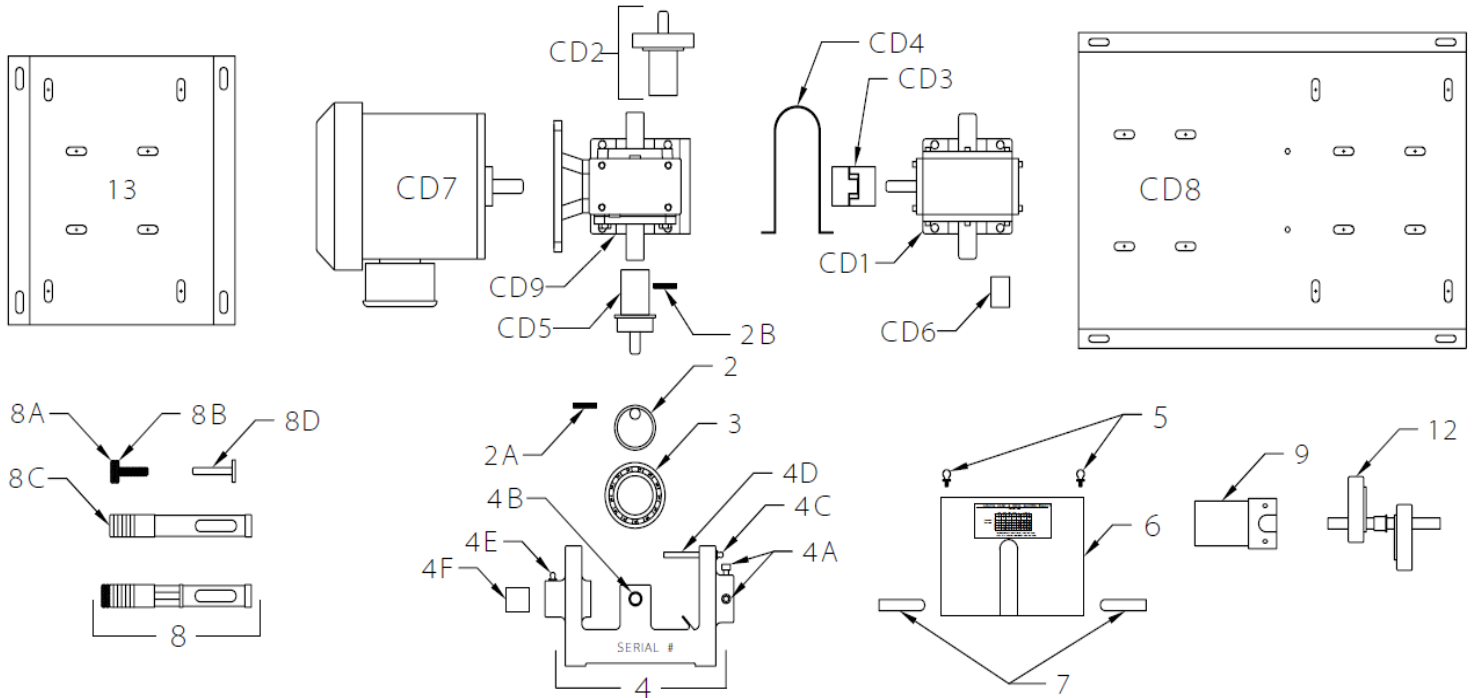


V-10 & V-5 DRIVE ASSEMBLIES



ITEM	PART #	DESCRIPTION
2	1101	Drive Bearing Support Cam
2A	1101-1	3/16 X 1 Rolled Drive Pin (For 1101)
2B	1101-2	3/16 X 1 1/4 Rolled Drive Pin (For 3L09CD)
3	3L09	Sealed Drive Bearing
4	008-2	Right Hand Base Casting (Standard)
	008-2D	Inside Casting On Duplex Assembly
	008-2L	Left Hand Base Casting (V-10 Duplex)
	008-2DL	Inside Casting On Left Hand Duplex Assembly
4A	008-4	1/4-20 X 5/8" Allen Cap Screw (2 Required)
4B	008-5	5/8" Od X 1/2" Id X 1/2" Long Oilite Bearing
	008-6	5/8" Od X .485" Id X 1/2" Long Oilite Bearing
4C	006-2	Drive Bearing Grease Fitting
4D	006-3	Grease Tube
4E	006-2	Slide Bushing Grease Fitting
4F	008-10	1 1/8" X 1" X 1 1/8" Oilite Bearing (2 Required)
5	1102-1	Cover Screw (2 Required)
6	1102	Clear Plastic Cover (Standard)
	1102-D	Clear Plastic Cover (Left Hand)
	1102-GC	Stainless Steel Gasketed Cover
7	1102-2	Cover Clip (2 Required)
8	A-1097-1	Simplex Or Duplex Slide Assembly
8A	1100	Slide Adjustment Screw
8B	1099	Adjustment Screw Locknut
8C	A-1097	Simplex Or Duplex Slide
8D	1098	Slide Pin
9	SLSD	Spring Loaded Slide Device
12	009	Duplex Drive Shaft Assembly
	009-H	Hydraulic Duplex Drive Shaft Assembly
13	FBP	V-10 Simplex & Duplex Base Plate

ITEM	PART #	DESCRIPTION	
CD1	192A02-20:1	90 RPM Coupling Drive Speed Reducer	
	192A02-25:1	60 RPM Coupling Drive Speed Reducer	
	192A02-50:1	30 RPM Coupling Drive Speed Reducer	
	192A02-100:1	18 RPM Coupling Drive Speed Reducer	
CD2	3L09 CD	Drive Bearing Assembly for 7/8" Shaft	
CD3	L075	5/8" X 5/8" Lovejoy Flexible Coupling Set	
CD4	FCG	Coupling Guard	
CD5	VAS-CD	Output Coupling & Cam Assembly for 7/8" Shaft	
	VAS-CD-D	7/8" X 1/2" Coupling for Triplex or Quad	
CD6	MS	Motor Spacer for Coupling Drive (4 Required)	
CD7	MO-3	1Ph 120/240 VAC 60Hz 1/2 HP EPFC 56 Frame	
	MO-4	90 VDC 1/2 HP TEFC 56/56C Frame	
	MO-6	3Ph 230/460 VAC 60Hz 1/2 HP EPFC 56 Frame	
	MO-7	3Ph 230/460 VAC 60Hz 1/2 HP TEFC 56 Frame	
	MO-8	1Ph 120/240 VAC 60Hz 1/2 HP TEFC 56 Frame	
	MO-12	1Ph 120/240 VAC 60Hz 1/3 HP TEFC 56C Frame	
	MO-12V	1Ph 120/240 VAC 60Hz 1/2 HP TEFC 56C Frame	
	MO-13	1Ph 120/230 VAC 60Hz 1/2 HP EPFC 56C Frame	
	MO-14	90 VDC 1/4 HP TEFC 56C Frame	
	MO-14V	90 VDC 1/2 HP TEFC 56/56C Frame	
	MO-15	3Ph 230/460 VAC 60Hz 1/3 HP TEFC 56C Frame	
	MO-15V	3Ph 230/460 VAC 60Hz 1/2 HP TEFC 56C Frame	
	MO-16	3Ph 240/480 VAC 60Hz 1/2 HP EPFC 56C Frame	
	MO-17	3Ph 575 VAC 60Hz 1/3 HP TEFC 56C Frame	
	MO-18	1Ph 115/230 VAC 50/60Hz 1/2 HP TEFC 56C Frame	
	MO-19	3Ph 230/460 VAC 1/2 HP TENV Inverter Duty 56C	
	CD8	BP-CD	Coupling Drive Base Plate
	CD9	FMSR-60	60 RPM 56C Flanged Speed Reducer
		FMSR-30	30 RPM 56C Flanged Speed Reducer
FMSR-18		18 RPM 56C Flanged Speed Reducer	
FMSR-12		12 RPM 56C Flanged Double Reduction Speed Reducer	
FMSR-6		6 RPM 56C Flanged Double Reduction Speed Reducer	