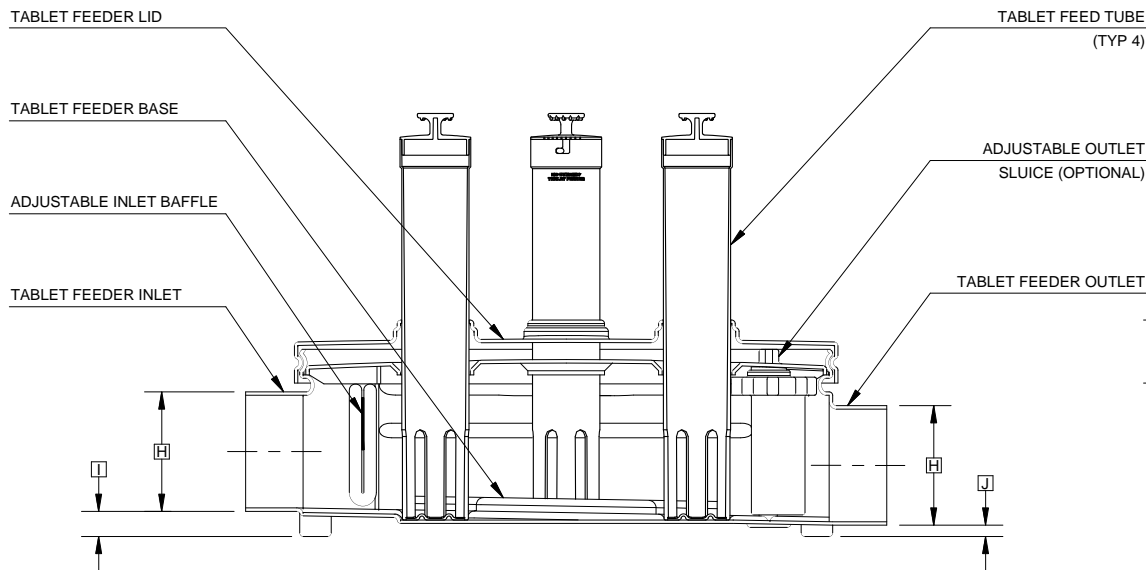
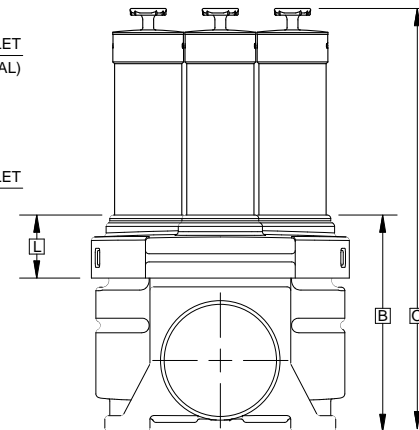


PLAN VIEW



SECTION A-A



OUTLET END VIEW

GENERAL NOTES:

- ① FALL THROUGH TABLET FEEDER FROM INLET INVERT TO OUTLET INVERT IS ONE INCH $\pm 3/8"$.
- ② FINISHED GRADE MUST BE MAINTAINED AT LEAST SIX INCHES BELOW TOP OF LID.
- ③ FEEDER BASE HEIGHT MAY BE REDUCED IN SIX INCH INCREMENTS.
- ④ WHERE TABLET FEEDER IS INSTALLED WITHOUT MOUNTING BRACKETS, INSTALL ON FOUR INCH SAND OR FINE GRAVEL LEVELING PAD.

PROJECT ENGINEER'S APPROVAL:
I (WE) HEREBY CERTIFY THAT THIS DRAWING HAS BEEN CHECKED AND IS APPROVED FOR USE IN CONFORMITY WITH THE CONTRACT DOCUMENTS.

DATE: _____

NAME: _____

CONTRACTOR'S CERTIFICATION:
I (WE) HEREBY CERTIFY THAT THIS DRAWING HAS BEEN CHECKED AND IS APPROVED FOR USE IN CONFORMITY WITH THE CONTRACT DOCUMENTS.

DATE: _____

NAME: _____

CRITICAL DIMENSIONS

A	1'-2 1/2"	J	0'-0 1/2"
B	1'-0" TO 1'-6"	K	1'-2 1/2"
C	2'-11 3/4"	L	0'-3 1/2"
D	0'-6"	M	1'-0"
E	0'-7 1/4"	N	2'-4"
F	0'-1 3/4" (TYP)	O	2'-0"
G	0'-3" (TYP)	P	
H	0'-6 5/8" (TYP)	Q	
I	0'-1 1/2"	R	

TOLERANCES

NOMINAL DIMENSIONS ARE SHOWN AND MAY VARY $\pm 3/8"$ FOR ROTOMOLDED COMPONENTS.

U.S. AND FOREIGN PATENTS PENDING	norweco	REVISION DATE	04-04-12	REVISION	C
		DESIGNED BY	BDS	APPROVED BY	JMM
© MMVII	BIO-DYNAMIC® MODEL XT 4000 TABLET FEEDER	DATE	10-2-97	SCALE	NTS
		DRAWING NO.	PC-5-9503		